

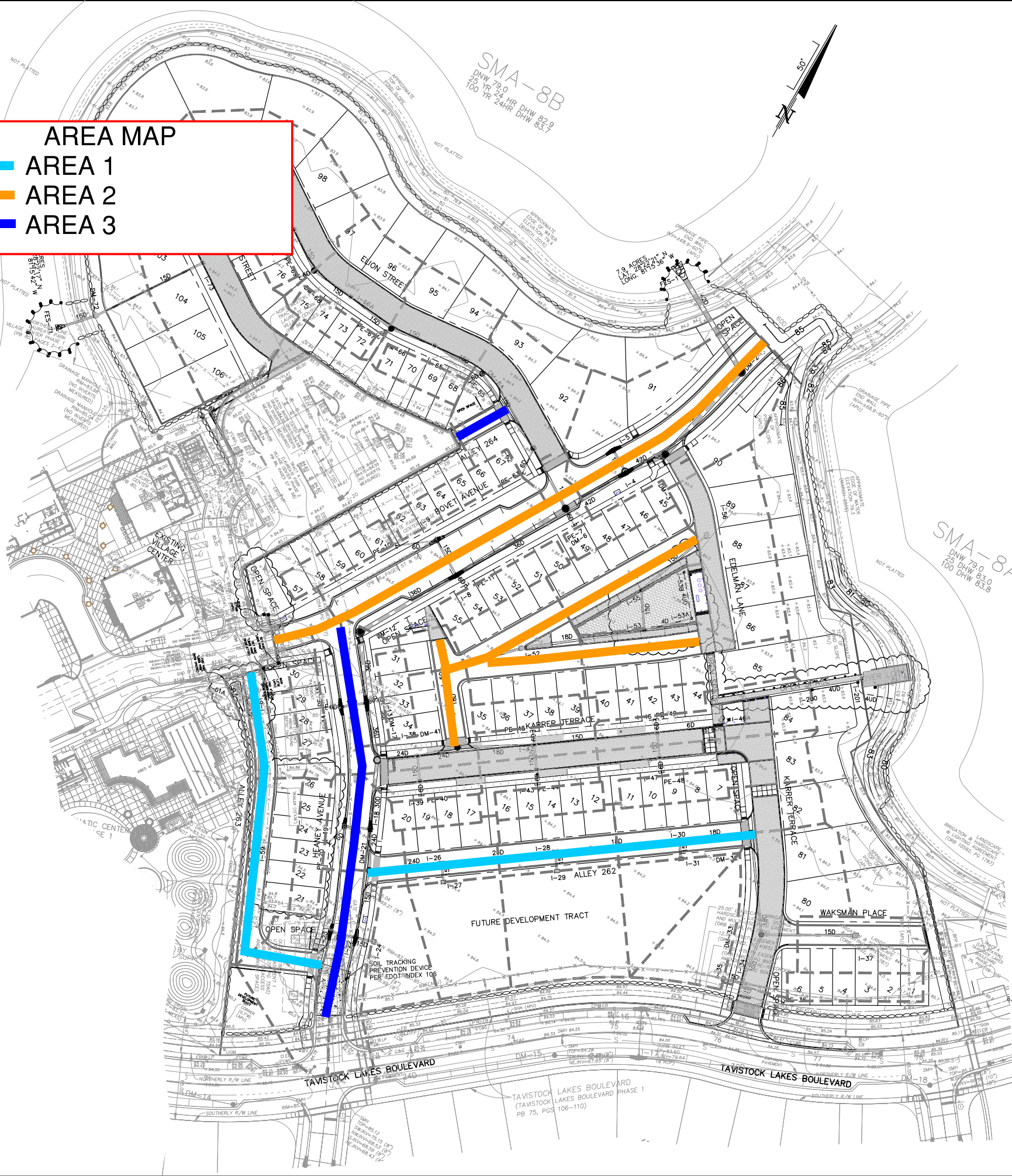
DONALD W. MCINTOSH ASSOCIATES, INC. RESERVES THE EXCLUSIVE COPYRIGHT AND PROPERTY RIGHTS TO THIS DRAWING WHICH MAY NOT BE REPRODUCED, CHANGED, OR COPIED IN ANY FORM OR MANNER, NOR CAN IT BE ASSIGNED TO ANY PARTY WITHOUT DONALD W. MCINTOSH ASSOCIATES, INC.'S WRITTEN CONSENT.

AREA MAP

AREA 1

AREA 2

AREA 3



EROSION AND SEDIMENT CONTROL NOTES:

01. BECAUSE OF THE PROJECT'S PROXIMITY TO ADJACENT LAKES AND WETLANDS, CONTRACTOR SHALL MAKE EVERY EFFORT TO MINIMIZE EROSION, TO RETAIN SEDIMENT WHICH UNAVOIDABLY WILL RESULT FROM ONSITE CONSTRUCTION ACTIVITIES, TO PREVENT SEDIMENTATION AND OTHERWISE PROTECT ONSITE WETLANDS WHICH ARE TO BE RETAINED. THE BASIC PRINCIPLES DESCRIBED HEREIN ARE INTENDED TO DEFINE THE DEVELOPER'S INTENT AND REQUIRE THE CONTRACTOR TO SATISFY THE SPECIFIC REQUIREMENTS OF GOVERNMENTAL AGENCIES HAVING JURISDICTION OVER THE WORK.
02. THE SCHEDULING, SEQUENCING AND CONTROL MEASURES, WHICH ARE OUTLINED HEREIN, ARE SUBJECT TO FINAL DEFINITION BY THE CONTRACTOR WHO WILL BE RESPONSIBLE FOR IMPLEMENTATION AND COMPLIANCE.
03. PRIOR TO CONSTRUCTION, THE CONTRACTOR SHALL BE REQUIRED TO SUBMIT A CONSTRUCTION SCHEDULE DEPICTING EACH PHASE OF THE WORK. THE CONTRACTOR SHALL ALSO BE REQUIRED TO SUBMIT AN EROSION AND SEDIMENT CONTROL PLAN TO THE OWNER, THE ENGINEER AND THE CITY OF ORLANDO ENCOMPASSING THE CONTRACTOR'S EXACT PLAN OF IMPLEMENTING THE PRINCIPLES AND THE REQUIREMENTS DESCRIBED HEREIN. NO CONSTRUCTION CAN BEGIN UNTIL SAID PLAN HAS BEEN APPROVED BY THE CITY OF ORLANDO.
04. DURING CONSTRUCTION, THE CONTRACTOR SHALL TAKE ALL REASONABLE MEASURES TO ENSURE AGAINST POLLUTING, SILTATION OR DISTURBANCE TO SUCH AN EXTENT AS TO CAUSE AN INCREASE IN TURBIDITY TO THE ADJACENT WATER BODIES IN COMPLIANCE WITH ALL PERMIT REQUIREMENTS RELATED TO SUCH MEASURES.
05. EROSION CONTROL METHODS SHALL INCLUDE TEMPORARY CONTROL STRUCTURES SUCH AS SEDIMENT BASINS, SEDIMENT CHECKS, SILT BARRIERS, SILT SCREENS, TURBIDITY BARRIERS OR THEIR BEST MANAGEMENT PRACTICE AVAILABLE TO THE INDUSTRY.
06. EROSION AND SEDIMENT CONTROL INSTALLATIONS SHALL BE MAINTAINED BY CONTRACTOR THROUGHOUT THE CONSTRUCTION PERIOD AND UNTIL NEW VEGETATIVE GROWTH HAS BEEN ESTABLISHED.
07. THROUGHOUT THE CONSTRUCTION PERIOD, THE CONTRACTOR SHALL DAILY INSPECT PROTECTIVE INSTALLATIONS FOR FAILURES OR SIGNS OF FAILURE OR MALFUNCTION AND EFFECT REPAIRS OR REPLACEMENT IMMEDIATELY UPON DISCOVERY.
08. THE RECOMMENDED GENERAL SEQUENCE OF CONSTRUCTION FOR ALL BASINS IS AS FOLLOWS:
- A. PLACEMENT OF PERIMETER PROTECTIVE MEASURES (SILT FENCE, HAY BALES, ETC.) AROUND ONSITE LAKES, AT POINTS OF OFFSITE DISCHARGE, AND AROUND WORK AREAS.

B. REROUTE RUNOFF FROM AREAS OUTSIDE OF THE DEVELOPMENT AREA TO MINIMIZE FLOW THROUGH AREAS TO BE DISTURBED BY CONSTRUCTION. BERMS, SWALES AND OTHER MEANS USED FOR SUCH CONVEYANCE SHALL BE VEGETATED AND MEASURES TAKEN TO PROVIDE PROTECTION UNTIL STABILIZATION HAS BEEN ESTABLISHED.

C. SELECT LOCATIONS FOR PLACEMENT OF MATERIAL, WHETHER SUITABLE FOR FILL OR UNSUITABLE, AND CONSTRUCT CONTAINMENT BERMS AROUND THE AREA. THE USE OF STRIPPINGS FOR THIS PURPOSE MAY ACCELERATE BERM REVEGETATION. CONSTRUCT TEMPORARY OUTLETS FROM CONTAINMENT AREAS WITH SCREENS, HAY BALES, SETTLING BASINS OR OTHER MEASURES TO PREVENT SILT TRANSPORTATION.

D. SELECT/DESIGNATE ACCESS ROUTING FOR CONSTRUCTION EQUIPMENT AND VEHICLES AND PROVIDE PERIMETER PROTECTIVE MEASURES WHERE EXISTING TERRAIN WILL BE SUBJECT TO DISRUPTION BY SUCH TRAFFIC.

E. IF REQUIRED, CONSTRUCT ABOVE GROUND OR OTHER CONTAINMENT AREAS FOR CONSTRUCTION AREA RUNOFF. PROVIDE SCREENS, HAY BALES, ETC., TO FILTER DISCHARGE THESE AREAS.

F. GRASSING, SODDING, ETC. SHALL BE IN PLACE IMMEDIATELY UPON COMPLETION OF DISTURBED AREAS WITHIN PROJECT AREA.

G. IN ANY EVENT, CONTRACTOR IS SOLELY RESPONSIBLE FOR ENSURING ANY AND ALL MEASURES ARE TAKEN TO COMPLY WITH LOCAL, STATE, FEDERAL AND OWNER REQUIREMENTS FOR EROSION AND SEDIMENT CONTROL DURING CONSTRUCTION.
09. BAHIA SOD REQUIRED AROUND ALL STORM INLETS IN UNPAVED AREAS.
10. THE UNITED STATES ENVIRONMENTAL PROTECTION AGENCY HAS AUTHORIZED THE STATE OF FLORIDA TO ADMINISTER THE NATIONAL POLLUTANTS DISCHARGE ELIMINATION SYSTEM (N.P.D.E.S.), CONTRACTOR IS ADVISED THAT OPERATORS ARE REQUIRED TO FILE WITH F.D.E.P., A NOTICE OF INTENT TO USE THE GENERIC PERMIT FOR STORMWATER DISCHARGE FROM CONSTRUCTION ACTIVITIES THAT DISTURB ONE OR MORE ACRES OF LAND. IT IS THE CONTRACTOR'S SOLE RESPONSIBILITY TO SUBMIT THE NOTICE OF INTENT (N.O.I.) TO F.D.E.P. WITH A COPY TO THE OWNER, THE ENGINEER AND THE CITY AT LEAST 48 HOURS BEFORE INITIATING CONSTRUCTION.
11. AS REQUIRED BY THE GENERIC PERMIT, CONTRACTOR SHALL PREPARE A STORMWATER POLLUTION PREVENTION PLAN (S.W.P.P.P.) PURSUANT TO ALL REQUIREMENTS OF THE GENERIC PERMIT.
12. PURSUANT TO THE N.P.D.E.S., CONTRACTOR SHALL MAINTAIN RECORDS OF DATES WHEN MAJOR GRADING ACTIVITIES TEMPORARILY OF PERMANENTLY INITIATE AND SHALL INITIATE STABILIZATION MEASURES WITHIN 14 DAYS AFTER SUCH TEMPORARY OR PERMANENT CESSATION OF CONSTRUCTION ACTIVITY. STABILIZATION REQUIREMENTS (SODDING WHERE SHOWN ON THE PLANS, SEEDING AND MULCHING ELSEWHERE) APPLY TO ALL AREAS DISTURBED BY CONSTRUCTION, ON-SITE AND OFF-SITE.
13. CONTRACTOR SHALL PROVIDE INSPECTIONS BY QUALIFIED PERSONNEL OF ALL POINTS OF DISCHARGE, DISTURBED AREAS NOT YET FINALLY STABILIZED, STORAGE AREAS EXPOSED TO RAINFALL, STRUCTURAL CONTROLS AND VEHICULAR ACCESS LOCATIONS. INSPECTIONS SHALL BE MADE AT LEAST ONCE EVERY SEVEN CALENDAR DAYS AND WITHIN 24 HOURS OF THE END OF A STORM THAT IS 0.5 INCHES OR GREATER.
14. CONTRACTOR SHALL MAINTAIN A COPY OF THE S.W.P.P.P. AT THE SITE FROM THE DATE OF PROJECT INITIATION TO THE DATE OF FINAL STABILIZATION.
15. CONTRACTOR SHALL AMEND THE S.W.P.P.P. WHENEVER THERE IS A CHANGE IN DESIGN, CONTRACTION, OPERATION OF MAINTENANCE THAT MAY HAVE A SIGNIFICANT EFFECT ON THE POTENTIAL FOR OFF-SITE DISCHARGE OF POLLUTANTS, INCLUDING THE ADDITION OF OR CHANGE IN LOCATION OF DISCHARGE POINTS AND REVISION TO CONTROLS WHICH MAY HAVE PROVED TO BE INEFFECTIVE.
16. CONTRACTOR SHALL REMAIN RESPONSIBLE FOR OPERATION AND MAINTENANCE OF POLLUTION PROTECTION MEASURES UNTIL CONSTRUCTION HAS BEEN COMPLETED IN SUBSTANTIAL CONFORMANCE WITH THE CONTRACT PLANS, CERTIFIED AS SUCH BY THE ENGINEER AND ACCEPTED BY THE (CITY/COUNTY), WHETHER OR NOT CONTRACTOR HAS SUBMITTED A NOTICE OF TERMINATION (N.O.T.) TO F.D.E.P.

CITY OF ORLANDO NPDES NOTES

1. DESCRIBE THE NATURE OF CONSTRUCTION ACTIVITY.
- ROADWAY CONSTRUCTION, STRUCTURAL FILL, INSTALLATION OF UTILITIES AND DRAINAGE USING CONVENTIONAL CONSTRUCTION TECHNIQUES AND BEST MANAGEMENT PRACTICES.
2. DESCRIBE THE INTENDED SEQUENCE OF MAJOR SOIL DISTURBING ACTIVITIES.
- SPREAD AND COMPACT FILL, INSTALL DRAINAGE & UTILITIES, CONSTRUCT ROADWAY.
3. TOTAL PROJECT AREA OF THE SITE IS APPROXIMATELY 11.5 ACRES.
4. TOTAL AREA OF THE SITE TO BE DISTURBED IS 11.5 ACRES.
5. EXISTING DATA DESCRIBING THE SOIL OR QUALITY OF ANY STORM WATER DISCHARGE FROM THE SITE.
- CONTRACTOR TO REFER TO THE GEOTECHNICAL REPORT FOR ONSITE SOIL
- STORM WATER THAT DISCHARGES FROM THE SITE SHALL BE MONITORED FOR TURBIDITY.
- SEE TURBIDITY MONITORING NOTES.
- ESTIMATE THE DRAINAGE AREA SIZE FOR EACH DISCHARGE POINT.
- THE DRAINAGE AREAS AT THE DISCHARGE POINTS ARE SHOWN ON THE PLAN. LATITUDE AND LONGITUDE OF EACH DISCHARGE POINT AND IDENTIFY THE RECEIVING WATER OR MS4 FOR EACH DISCHARGE POINT.
 - THE LATITUDE AND LONGITUDE AT THE DISCHARGE POINT ARE SHOWN

- A DETAILED DESCRIPTION OF ALL CONTROLS, BEST MANAGEMENT PRACTICES (BMP'S) AND MEASURES THAT WILL BE IMPLEMENTED AT THE CONSTRUCTION SITE FOR EACH ACTIVITY IDENTIFIED IN THE INTENDED SEQUENCE OF MAJOR SOIL DISTURBING ACTIVITIES SECTION.
- SEE ADDITIONAL EROSION CONTROL NOTES.
 - DESCRIBE ALL TEMPORARY AND PERMANENT STABILIZATION PRACTICES.
 - SEE ADDITIONAL EROSION CONTROL NOTES.
 - DESCRIBE ALL STRUCTURAL CONTROLS TO BE IMPLEMENTED TO DIVERT STORM WATER FLOW FROM EXPOSED SOILS AND STRUCTURAL PRACTICES TO STORE FLOWS, RETAIN SEDIMENT ON-SITE OR IN OTHER WAY LIMIT STORM WATER RUNOFF.
 - SEE ADDITIONAL EROSION CONTROL NOTES.
- DESCRIBE ALL SEDIMENT BASINS TO BE IMPLEMENTED FOR AREAS THAT WILL DISTURB 10 OR MORE ACRES AT ONE TIME.

- ALL PONDS SHALL BE EXCAVATED PRIOR TO INFRASTRUCTURE CONSTRUCTION
7. DESCRIBE ALL PERMANENT STORM WATER MANAGEMENT CONTROLS SUCH AS, BUT NOT LIMITED TO, DETENTION OR RETENTION SYSTEMS OR VEGETATED SWALES THAT WILL BE INSTALLED DURING THE CONSTRUCTION PROCESS.
- EXISTING STORMWATER PONDS SMA-8A & 8B HAVE BEEN PERMITTED AND CONSTRUCTED BY SEPARATE APPLICATION AND WILL BE USED FOR STORMWATER MANAGEMENT FOR THIS PROJECT.
8. DESCRIBE IN DETAIL CONTROLS FOR THE FOLLOWING POTENTIAL POLLUTANTS: WASTE DISPOSAL, OFFSITE VEHICLE TRACKING FROM CONSTRUCTION ENTRANCES/EXITS; THE PROPER APPLICATION RATES OF FERTILIZERS, HERBICIDES AND PESTICIDE USED AT THE CONSTRUCTION SITE; THE STORAGE, APPLICATION, GENERATION AND MIGRATION OF ALL TOXIC SUBSTANCES.
- THE WASTE DISPOSAL SHALL BE BY THE GENERAL CONTRACTOR IN ACCORDANCE WITH LOCAL, STATE AND FEDERAL GUIDELINES. SOIL TRACKING PREVENTION DEVICES WILL BE INSTALLED AT ALL CONSTRUCTION ENTRANCES/EXITS. SEE SHEET C502 FOR DETAIL.
9. PROVIDE A DETAILED DESCRIPTION OF THE MAINTENANCE PLAN FOR ALL STRUCTURAL AND NON-STRUCTURAL CONTROLS TO ASSURE THAT THEY REMAIN IN GOOD EFFECTIVE OPERATING CONDITION.
- SEE ADDITIONAL EROSION CONTROL NOTES.
10. DESCRIBE THE INSPECTION AND INSPECTION DOCUMENTATION PROCEDURES. INSPECTIONS MUST OCCUR AT LEAST ONCE A WEEK AND WITHIN 24 HOURS OF THE END OF A STORM EVENT THAT IS 0.5" OR GREATER.
- SEE ADDITIONAL EROSION CONTROL NOTES.
11. IDENTIFY AND DESCRIBE ALL SOURCES OF NON-STORMWATER DISCHARGES.

- EXCAVATE CAUTIOUSLY:
- THE CONTRACTOR SHALL EXERCISE EXTREME CAUTION WHEN EXCAVATING IN PROXIMITY OF WASTEWATER FORCE MAINS AND GRAVITY SEWERS. FORCE MAIN AND SEWER LOCATIONS SHOWN ON PLANS ARE NOT EXACT OR GUARANTEED. CONTRACTOR IS RESPONSIBLE FOR FIELD VERIFYING EXISTING UTILITY LOCATIONS.
- REPAIR IMMEDIATELY:
- ALL DAMAGE TO EXISTING SEWER/WATER/RECLAIM MAINS SHALL BE REPAIRED IMMEDIATELY BY THE CONTRACTOR AT THE CONTRACTOR'S EXPENSE.
12. AT ANY PROJECT CONNECTION TO PUBLIC OR PRIVATE ROADWAYS THAT ARE TO BE USED BY CONSTRUCTION TRAFFIC, CONTRACTOR SHALL PROVIDE A SOIL TRACKING PREVENTION DEVICE CONFORMING TO FDOT INDEX 106.
13. THE CITY OF ORLANDO "EROSION AND SEDIMENTATION CONTROL FOR CONSTRUCTION SITES" SHEET (COMMONLY KNOWN AS THE BLUE SHEET) WILL BE USED AS GUIDELINE TO EROSION CONTROL MEASURES. FOR PROJECTS GREATER THAN ONE ACRE, PLEASE PROVIDE THE NPDES NOI PERMIT PRIOR TO PERMIT.

GENERAL NOTES:

1. SEE NOTES, SPECIFICATIONS & LEGEND SHEET FOR ADDITIONAL INFORMATION INCLUDING VERTICAL DATUM.
2. THE SCALE OF THIS DRAWING MAY HAVE CHANGED DUE TO REPRODUCTION.

DONALD W. MCINTOSH ASSOCIATES, INC. ENGINEERS

2200 PARK AVENUE NORTH, WINTER PARK, FL 32789 407.644.4068

LAKE NONA SOUTH LAUREATE PARK NEIGHBORHOOD CENTER PHASE 1

CITY OF ORLANDO, FLORIDA

EROSION AND SEDIMENTATION CONTROL PLAN

DRAWING 14121-EROS

SHEET C101

7 OF 69

DONALD W. MCINTOSH ASSOCIATES, INC. CERTIFICATE OF AUTHORIZATION NO. 88

KIRBY L. WHITE

FLORIDA P.E. NO. 44802

DATE:

REPLACED LOT 56 WITH OS TRACT AND ADDED DRAINAGE

RELOCATED L-50 AND DELETED L-51

REVISIONS

NO.

DATE

2

5/16/16

2/12/16

NO.

DATE

JOB NUMBER

14121

SCALE

1"=50'

DATE

11/24/15

CHECKED BY

KLW

DESIGNED BY

DSW

DRAWN BY

DSW